

# SPP-2200 Filter Series

## 220 VAC Wire In      Balanced Filter/Surge Sup-



---

### Features:

- ▶ Exceeds recommendations for IEEE/ANSI C62.41.2-2002 Categories A3 & B3
- ▶ Powerful “no wear out” design.
- ▶ Meets severity level 4 of IEC/EN 6100-4-4 and 61000-4-5.
- ▶ Unique long life design combined with enhanced EMI/RFI filtering provide the most effective protection.
- ▶ Rugged epoxy molded case mounts easily inside instrumentation or on panel or wall.
- ▶ Both differential and common mode suppression and filtering.
- ▶ Can be hard wired into power distribution lines in the most severe industrial environments.
- ▶ Sub nanosecond response time stops failures due to lightning, spikes and over-voltage surges on main power entry panel servicing electronic equipment, while minimizing other electrical noise.
- ▶ Automatically resets after each transient. No maintenance is required.
- ▶ No additional secondary protection required.
- ▶ Bring equipment into compliance with IEC conductive emissions standards.

---

### Applications:

The SPP-2200 Filter Series is normally installed inside measurement and control equipment, computers, terminals, motor controllers, instrumentation, telemetry equipment, etc. Commonly used by control System Integrators. Effective protection for air conditioning (HVAC), remote site controls and other industrial environments. Other power and multiple phase models are available as well as DC versions.

---

### Typical Installation:

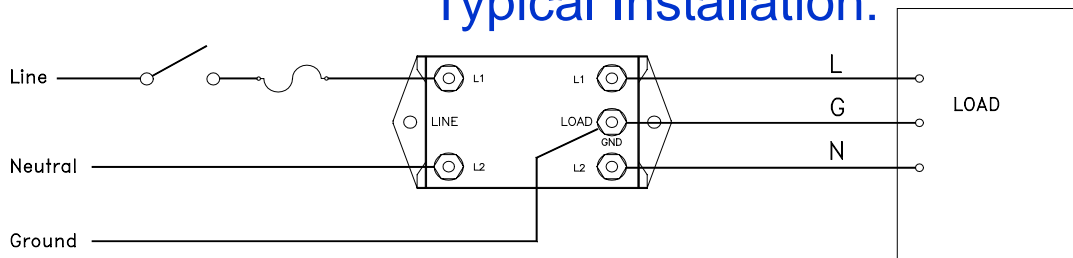
Install the SPP-2000 Filter Series after the AC power line switch and fuse, and as close to the electronic equipment it protects as possible. The ground terminal must be connected to a good earth ground (AWG #14 or larger). Dress output (clean) AC lines away from incoming power lines. The suppressor contains no internal fuse and can fail short under direct lightning exposure; therefore, proper fusing is essential. Heat sinking is not required.

# SPP-2200 Filter Series Operating Specifications:

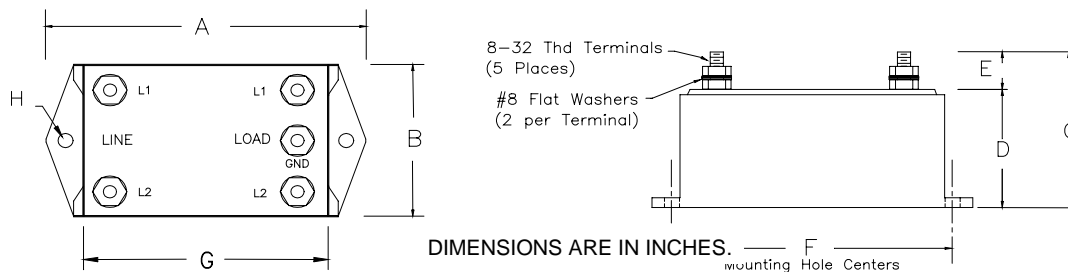
| Specifications                               | SPP-2204B                                  | SPP-2205B | SPP-2206 |
|--|--|-----------|----------|
| Operating Line Voltage 50/60 Hz              | 220/240                                    | 220/240   | 220/240  |
| Maximum Operating Line Current               | 15 Amps                                    | 25 Amps   | 5 Amps   |
| MCOV (Max. Continuous Operating Voltage) VAC | 275  | 275       | 275      |
| Suppressed Voltage rating (Vpk)              | 600V (L-N), 700V (L-G),<br>400V (N-G)      |           |          |
| Maximum Transient Voltage                    | 20 kV                                      | 20 kV     | 20 kV    |
| Maximum Transient Current                    | 10 kA                                      | 10 kA     | 10 kA    |
| Frequency Attenuation 100 kHz and 10 MHz     | -30 dB and -60 dB                          |           |          |
| Maximum Leakage Current (Line-Gnd)           | 1.0 mA @ 240 VAC / 60 Hz                   |           |          |
| Response Time                                | Less than 1 nanosecond                     |           |          |
| Operating and Storage Temperature            | -40 degrees Celsius to +85 degrees Celsius |           |          |

Consult the factory for other applications and operating conditions and specifications. All specifications at 25 degrees Celsius.  
Waveforms (1.2 x 50 µSec source voltage / 8 x 20 µSec source current).

## Typical Installation:



## Outline Dimensions:



DIMENSIONS ARE IN INCHES. F mounting Hole Centers

| MODEL     | A    | B    | C    | D    | E    | F    | G    | H (Hole Size) | WIRE CONNECTION |            |
|-----------|------|------|------|------|------|------|------|---------------|-----------------|------------|
| SPP-2204B | 4.00 | 2.00 | 2.07 | 1.57 | 0.50 | 3.50 | 3.00 | 0.1875        | 8-32            | Screw Post |
| SPP-2205B | 4.00 | 3.00 | 2.07 | 1.57 | 0.50 | 3.00 | 3.00 | 0.1875        | 10-32           | Screw Post |
| SPP-2206  | 3.00 | 2.00 | 2.00 | 1.50 | 0.50 | 2.50 | 2.00 | 0.1875        | 8-32            | Screw Post |

**Circuit Components, Inc.**  
 2400 S. Roosevelt Street Tempe, AZ • 85282  
 Tel: 480-967-0624 • Fax: 480-967-9385  
 Email: info@surgecontrol.com • Website: www.surgecontrol.com

**SURGE CON-**  
 A PRODUCT OF **CCI**

This information is not intended to and does not create any warranties, expressed or implied, including any warranty of merchantability or fitness for a particular purpose. Circuit Components Inc. reserves the right to change specifications at any time without notice.